

ANNEX B

Quick Startup Guide Advantech UTX-3115

SAFETY INSTRUCTIONS:

For all electric connections refer to the device user manual of the manufacturer

Download user manual at

http://www.alleantia.com/wp-content/uploads/2017/06/AnnexB-Advantech_Gateway.zip

Index

1. Device setup provided for ISC Alleantia.....	3
2. Main connections.....	3
- Power supply.....	3
- Keyboard, mouse and monitor connection.....	4
- LAN connection.....	4
- Serial port connections	4
3. Initial Setup.....	5
3.1. Windows Services to be disabled	5
3.1.1 Windows Firewall	5
3.1.2. Windows Defender	7
3.1.3. Windows Update	9
4. Applications to install.....	13
4.1. Antivirus.....	13
4.2. TeamViewer.....	13

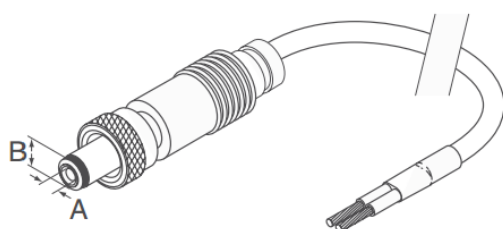
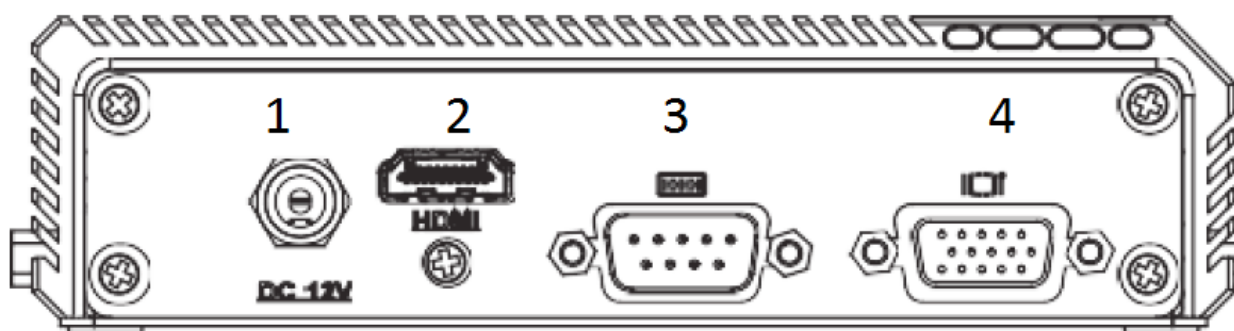
1. Device setup provided for ISC Alleantia

100	UTX-3115-BTO	
101	UTX-3115SA4-S6A2E	COMPUTER SYSTEM, Emb. sys.UTX-3115 w/4ante./2G RAM/32G SSD.Rev.A2
102	EWM-W151H01E	802.11 b/g/n Mini PCIe Card
103	AIMB-0BRK-DR01E	CHASSIS, UTX-3115 DIN Rail Mounting bracket kits
104	AGS-CT05-SYS-A	Standard Assembly + Functional Testing
105	968TW16ELO	Win10 IoT Ent LTSB 2016 MultiLang OEI Entry
106	...	Custom OS Image installation
109	EWM-C118HD01E	OTHERS, 2-band Cellular Module, SIM holder, half-size

2. Main connections

- Power supply

Advantech UTX-3115 should be powered with the connector on the back side of the chassis, with 12Vdc 3Amp power adaptor, included in the packing list (port n°1 in the figure). Power On/Off button is n°5.



Black cable

White cable

**PAY ATTENTION TO THE POLARITY
AS SHOWN IN THE FIGURE**

2. Main connections

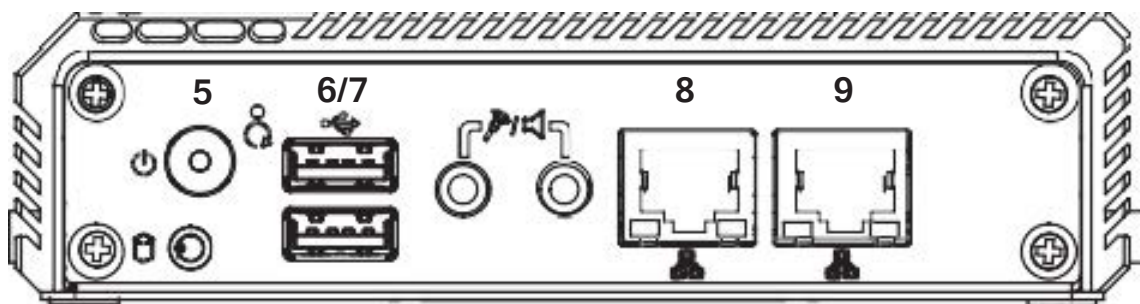
- Keyboard, mouse and monitor connection

To connect the monitor, connect its HDMI cable to the port n°2 on the front side of the chassis (see the figure above).

Connect keyboard and mouse to USB ports on the back side of the chassis (connectors n° 6/7, see figure below)

- LAN connection

Connect the PC to PLC, CNC and Ethernet via LAN RJ45 connector on the front side of the chassis (ports 8 and 9).



- Serial port connections

Provided configuration does not include RS485 port. To connect serial devices use TRP-C08S serial USB converter, included in the packing list, which comes with a COM port with RS422/485 protocol and a COMB port with RS232 protocol.

The ISC system is tested with this architecture and optional device.



Annex: User manual and certificate of conformity.

Download at http://www.alleantia.com/wp-content/uploads/2017/06/AnnexB-Advantech_Gateway.zip

3. Initial Setup

WARNING

THE GATEWAY MUST BE USED FOR THE APPLICATION ISC OF ALLEANTIA ONLY.
WE SUGGEST TO USE A FIREWALL TO FILTER WEB CONNECTIVITY (FOLLOW THE INDICATIONS OF
ISC MANUAL TCP AND UDP PORTS TO BE OPENED).

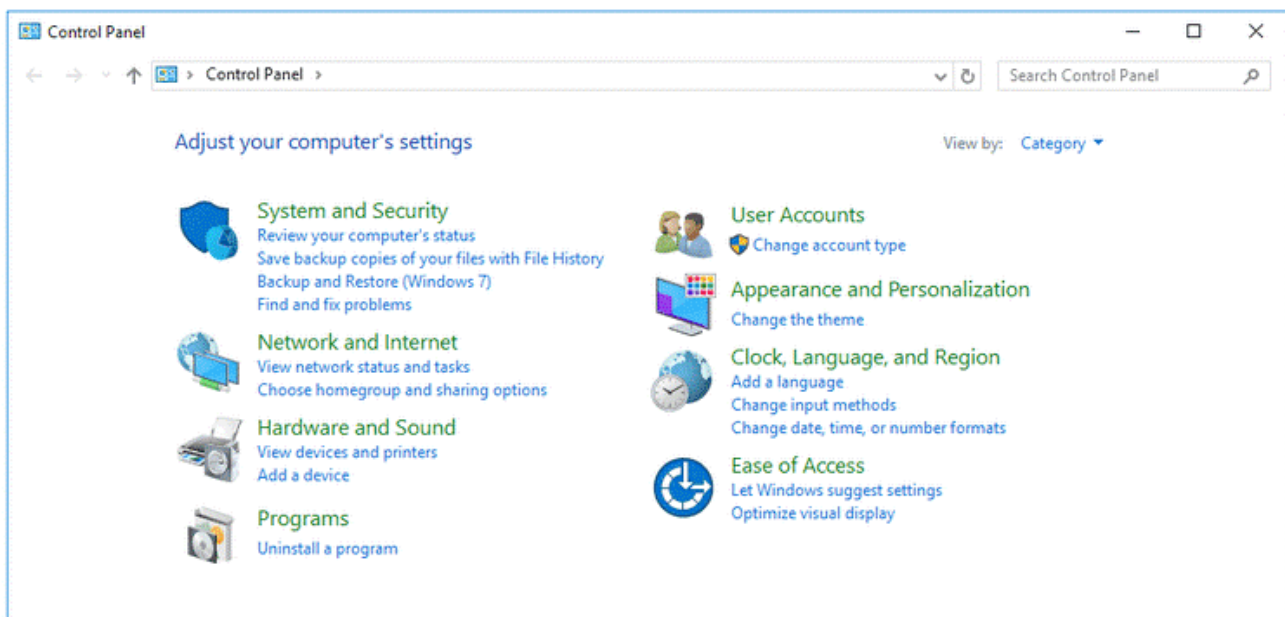
3.1. Windows Services to be disabled

3.1.1 Windows Firewall

Disable Windows Firewall from control panel.

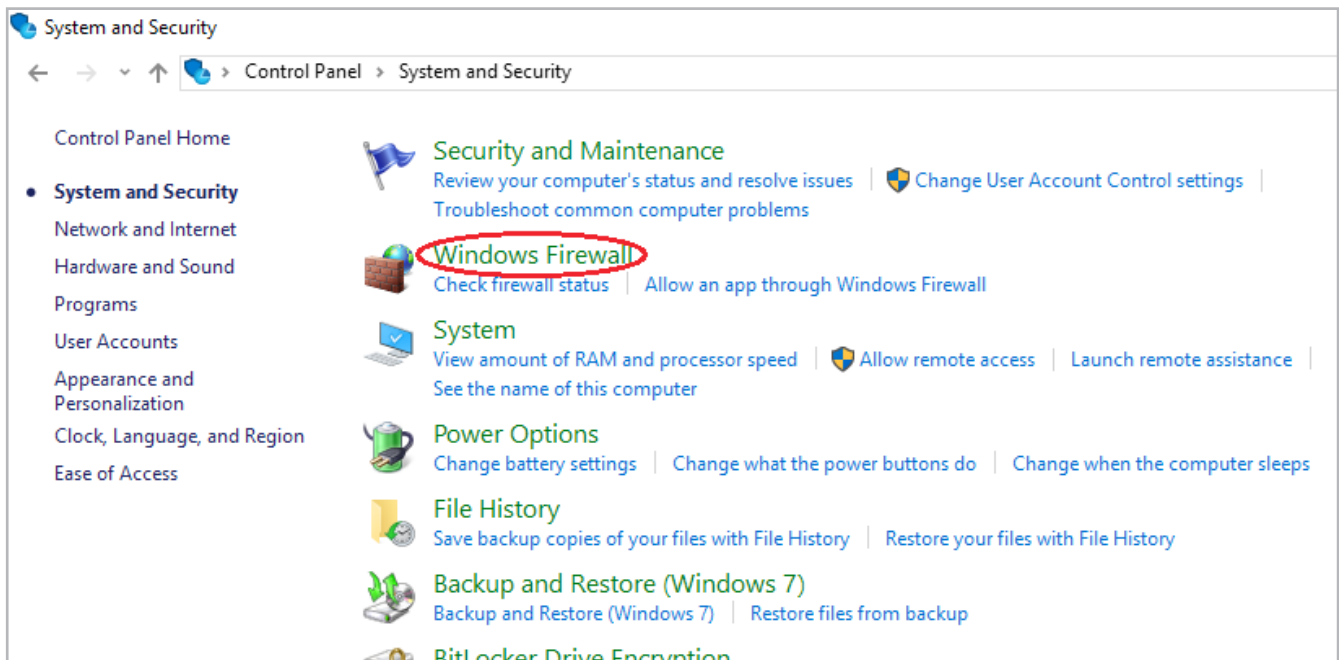
Procedures:

1. Press “**Start**” button, type “**control panel**” and open it.
2. Once open, click on “**System And Security**”.

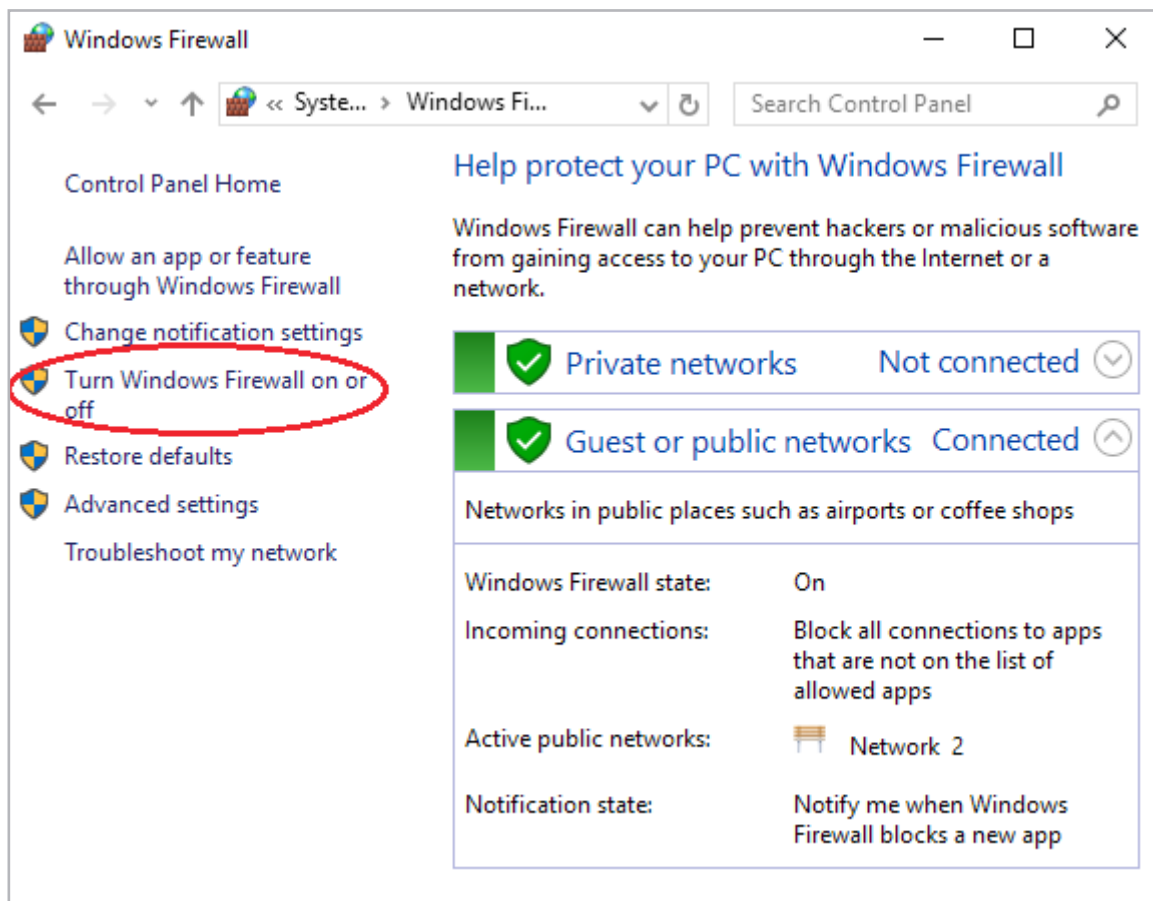


3. Initial BIOS Setup

3. Click “Windows Firewall”.

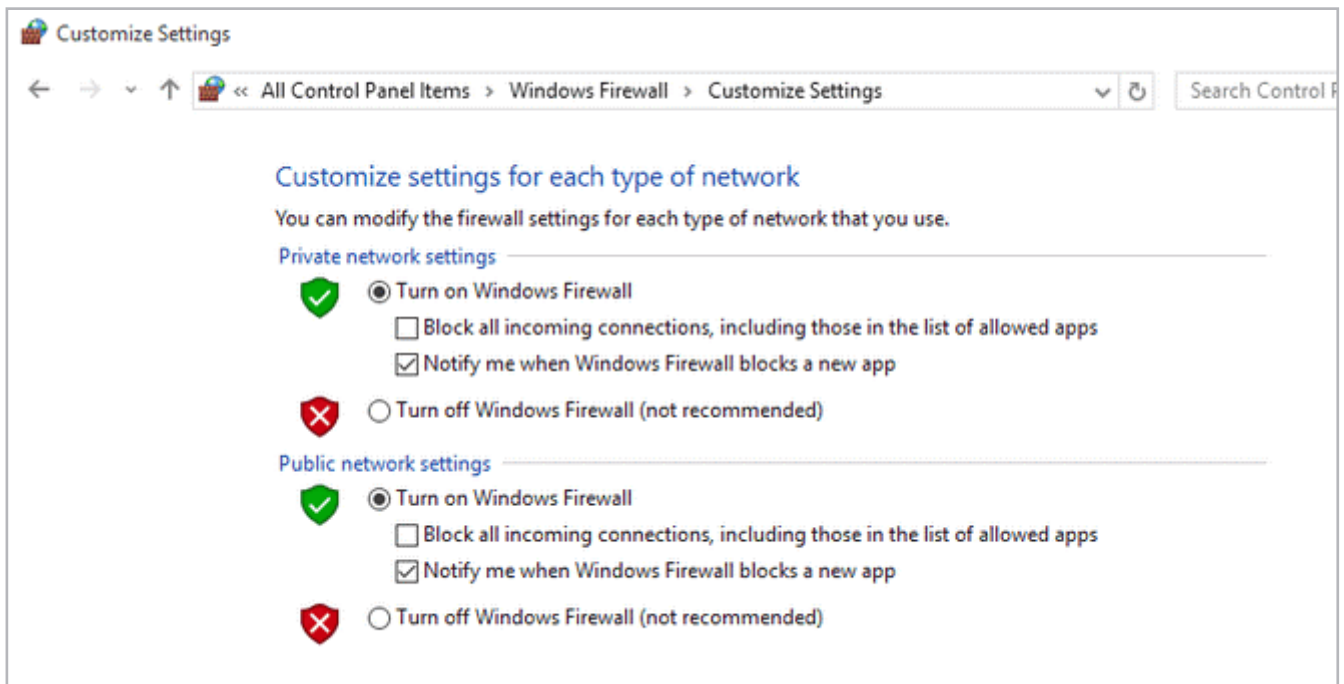


4. Select Turn Windows Firewall on or off on the left side.



3. Initial BIOS Setup

5. Tick all the “Turn off” options and at the end click on **OK** to confirm the settings.



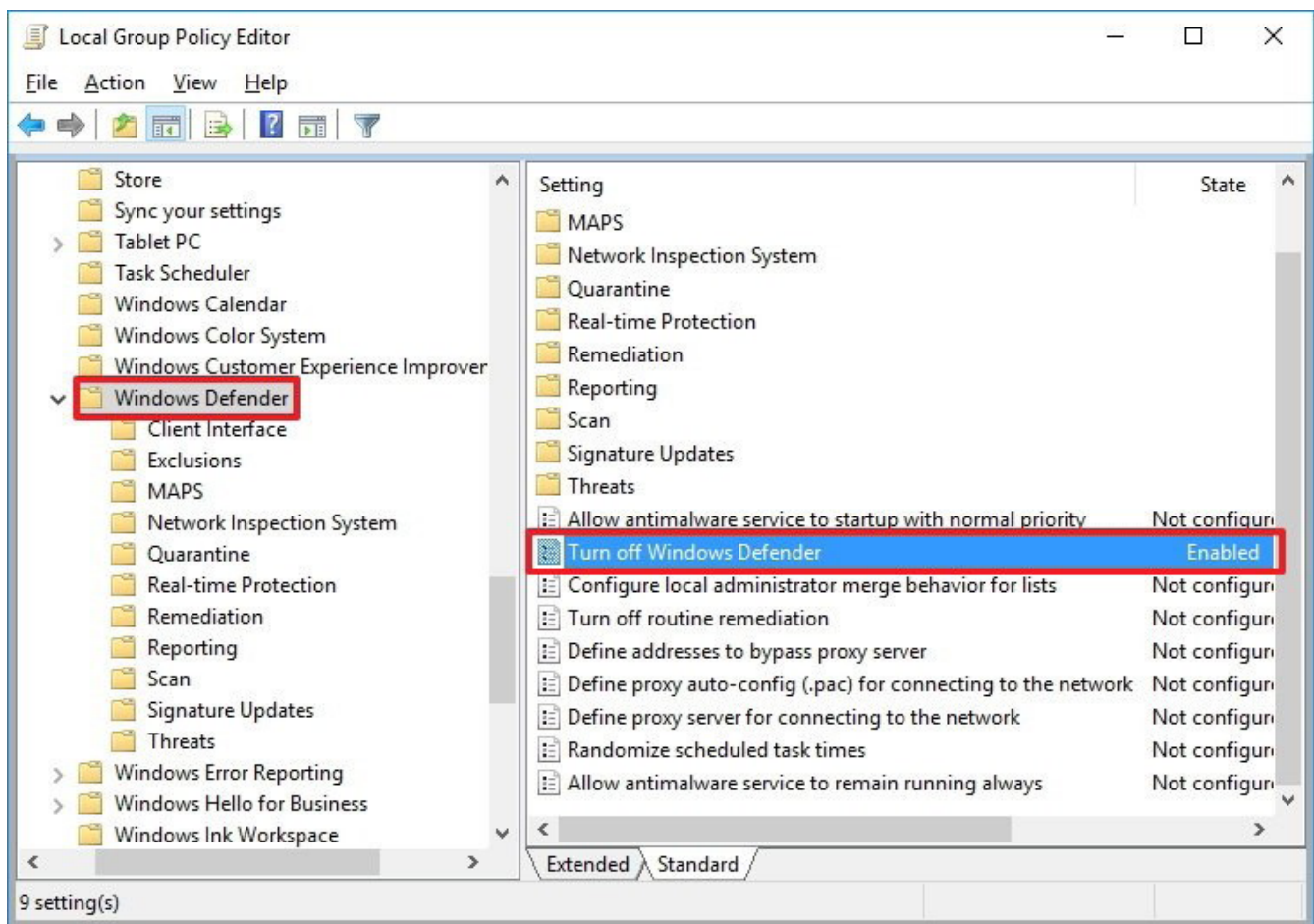
3.1.2. Windows Defender

Disable Windows Defenders by using Local Group Policy Editor utility.

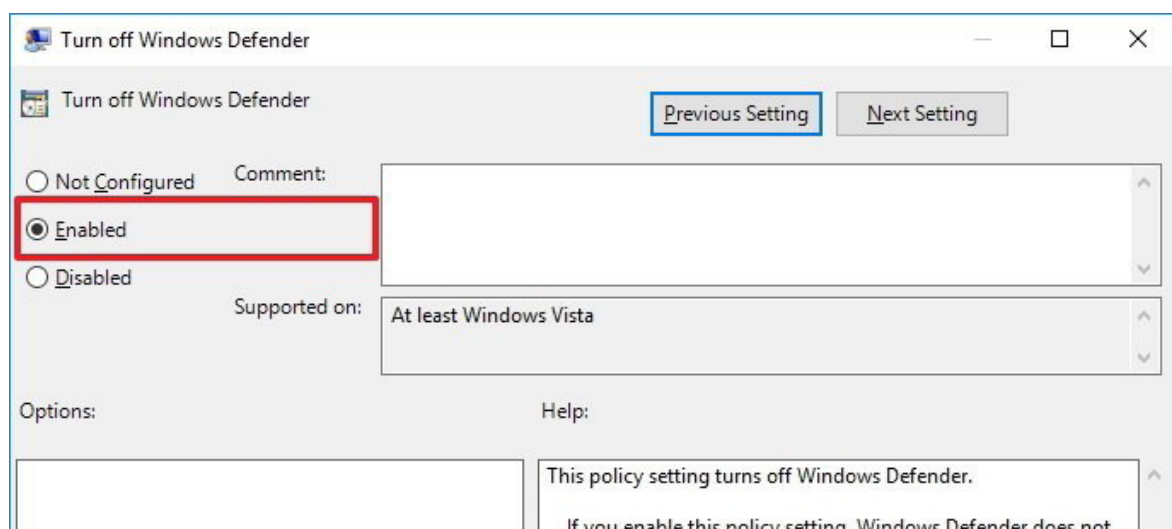
Procedures:

1. Use “Windows logo key + R key” shortcut from keyboard to open “Run” utility.
2. Type **gpedit.msc** and click on “OK” to open “Local Group Policy Editor”
3. Browse the following path: **Computer Configuration > Administrative Templates > Windows Components > Windows Defender**
4. Double click on “Turn Off Windows Defender” on the left side as show in figure.

3. Initial BIOS Setup



5. Click on “**ENABLED**” to disable “Windows Defender”, then click on “Apply” and finally click “OK” as shown in the next figure.

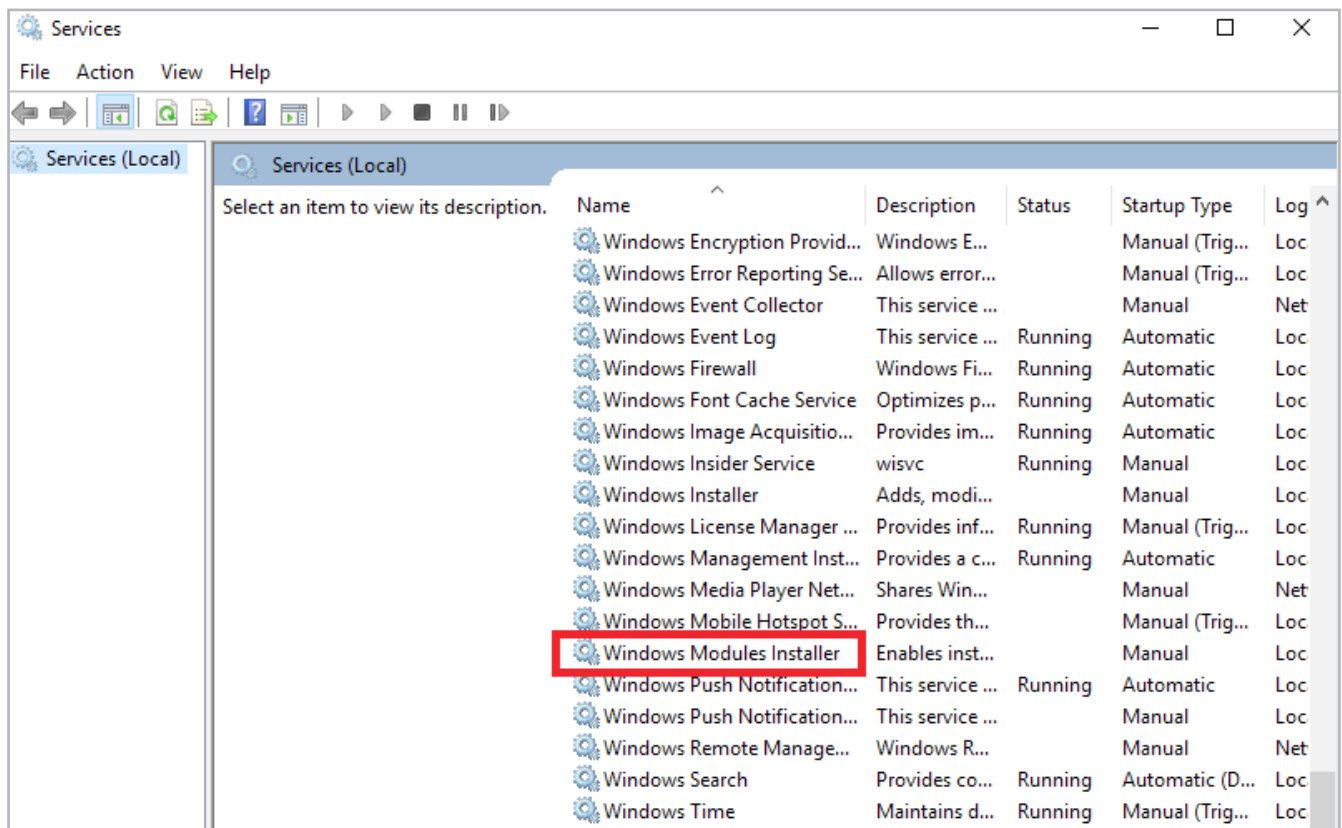


3. Initial BIOS Setup

3.1.3. Windows Update

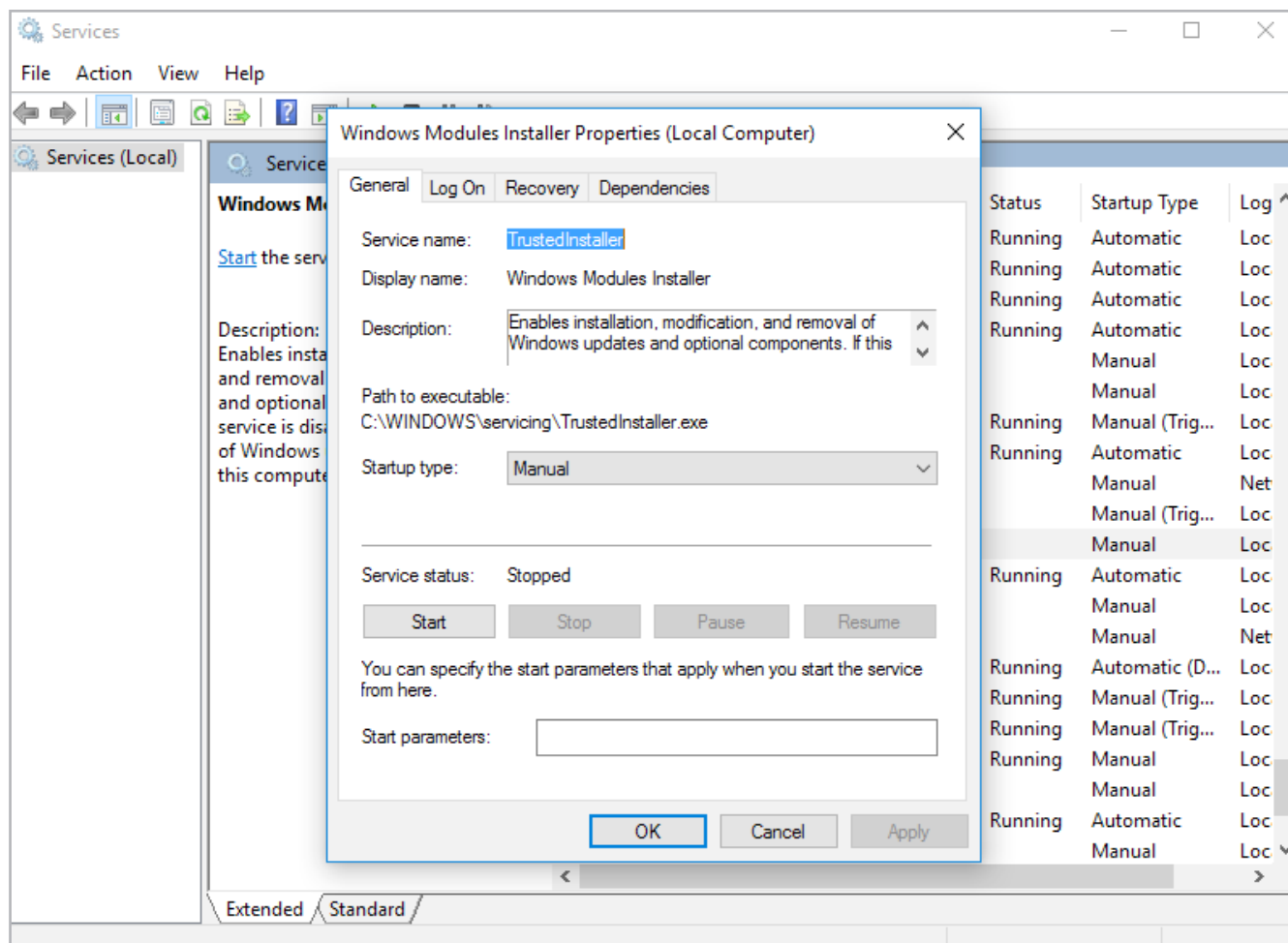
Disable Windows Update from services.msc utility

1. Use “Windows logo key + R key” shortcut from keyboard to open “Run” utility.
2. Type **services.msc** and click on **OK**.
3. Scroll down on services page. Find and double click on **Windows Modules Installer**.



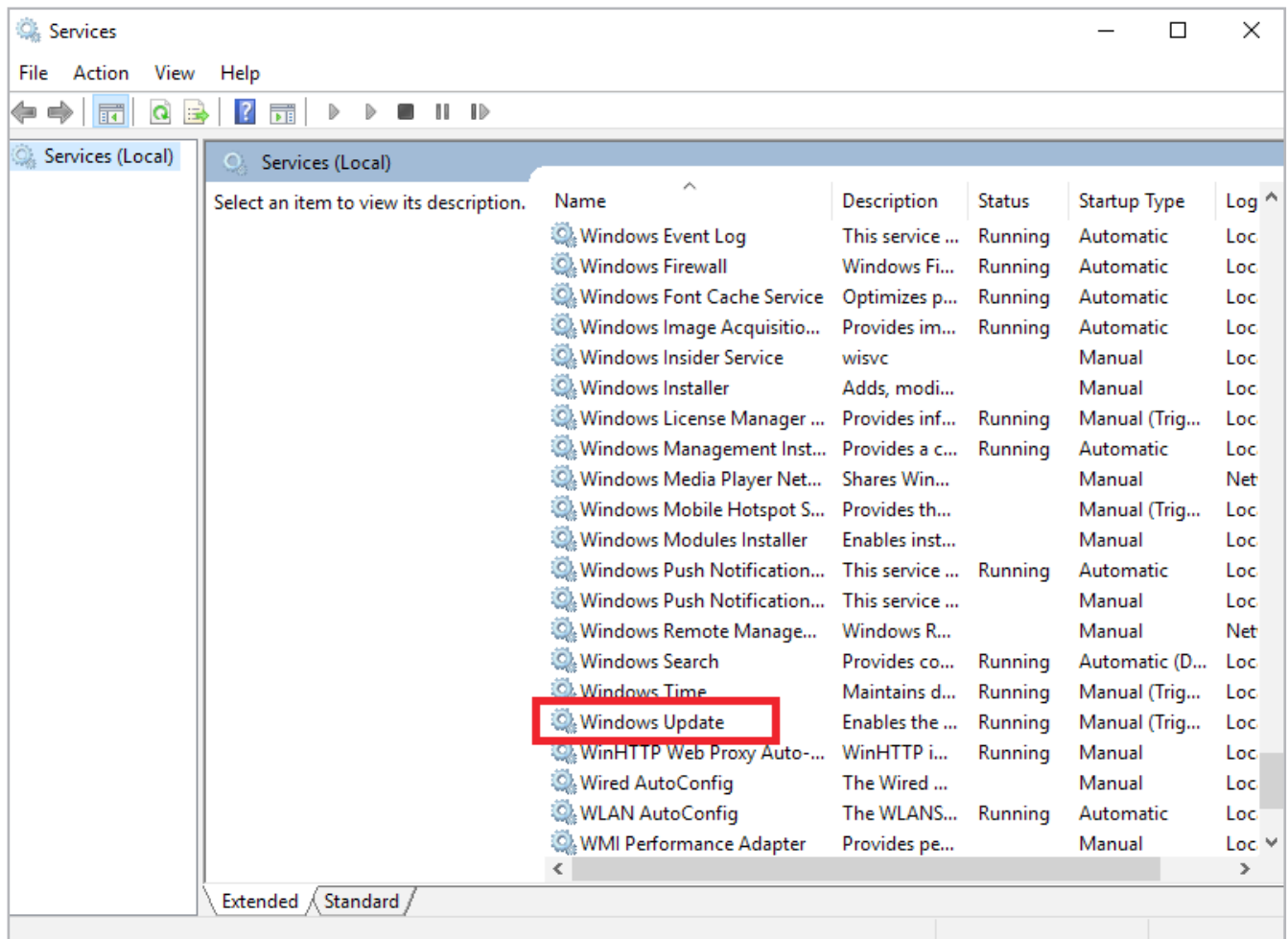
3. Initial BIOS Setup

4. Set its startup type to be **Manual**, then click on **Apply > OK**.



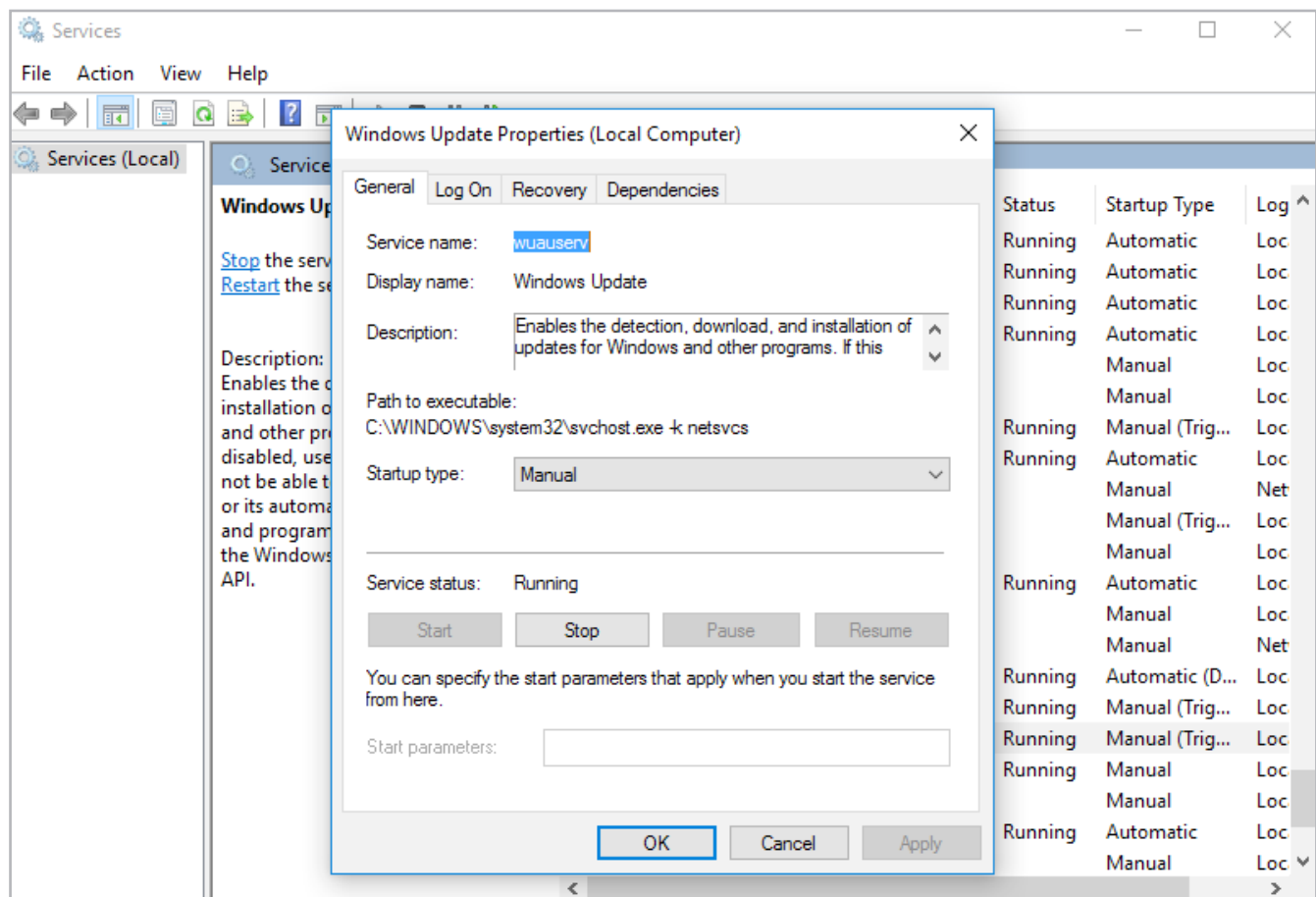
3. Initial BIOS Setup

5. On services settings page, find and double click on **Windows Update**.



3. Initial BIOS Setup

6. Set its startup type to be **Manual**, then click on **Apply > OK**.



WARNING

WE SUGGEST TO ACTIVATE WINDOWS UPDATE MONTHLY TO KEEP THE COMPUTER UPDATED. THEN REPEAT THE INSTRUCTION ABOVE TO DISABLE THE SERVICE.

4. Applications to install

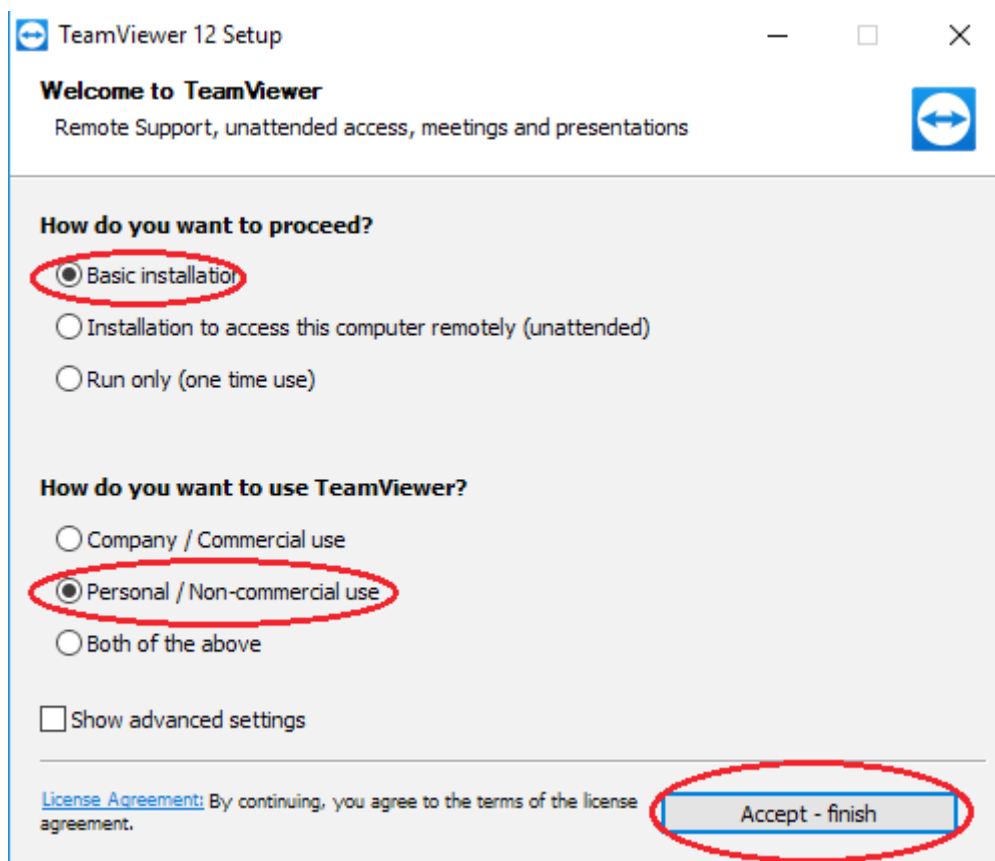
4.1. Antivirus

The system comes with Avast software (<https://www.avast.com>) installed with a free license (1 year of validity). It will be up to the user to update the license.

The use of other antivirus software is possible but not recommended, as it has been found to be a major machine resource commitment and, in many cases, not compatible with the performance requirements of Industrial IoT solutions, particularly for interfacing CNC- and PLC- controlled machines.

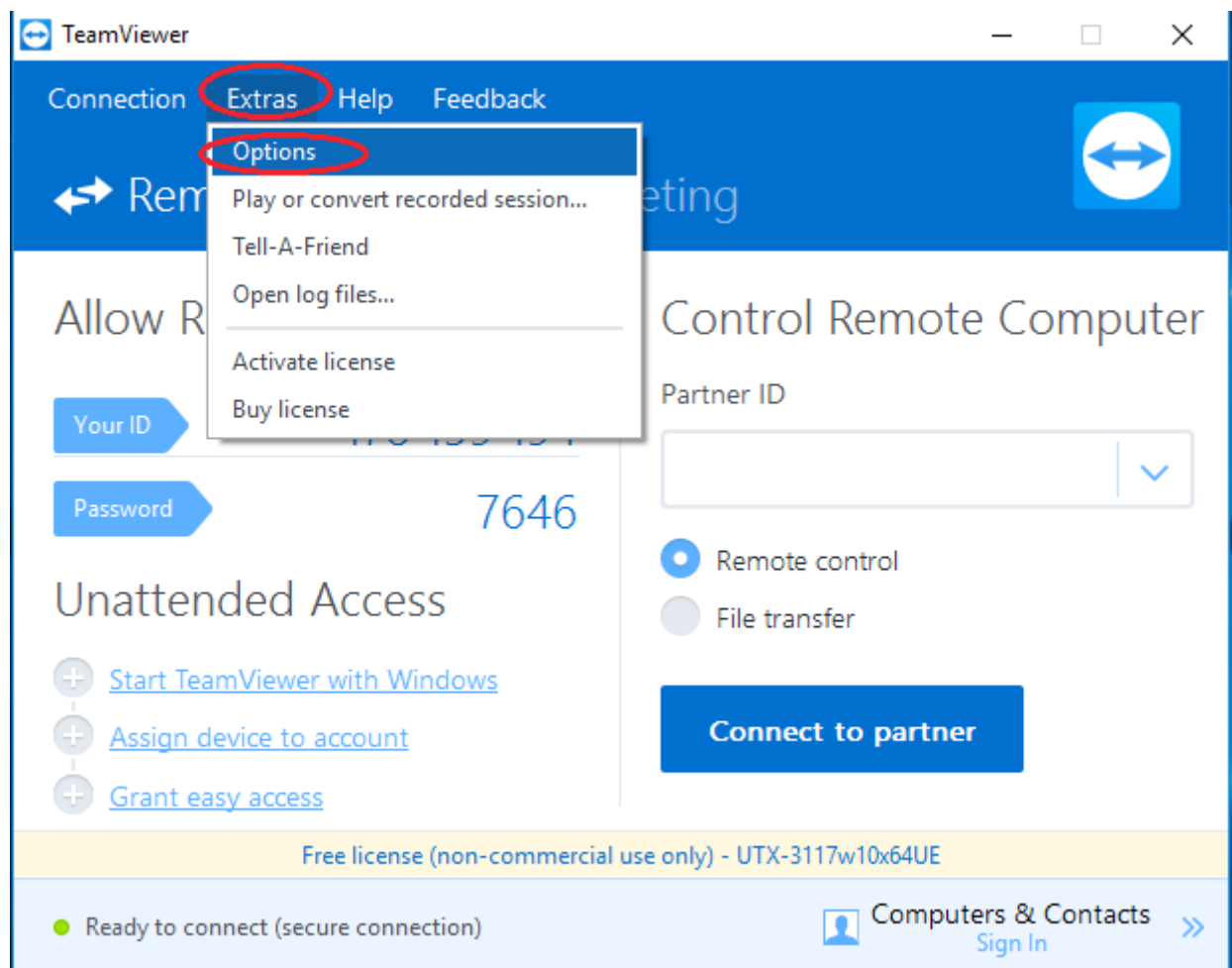
4.2. TeamViewer

1. Once the installation file of TeamViewer is open, tick **Basic Installation** and **Personal/non commercial use** and click on **Accept > Finish**.

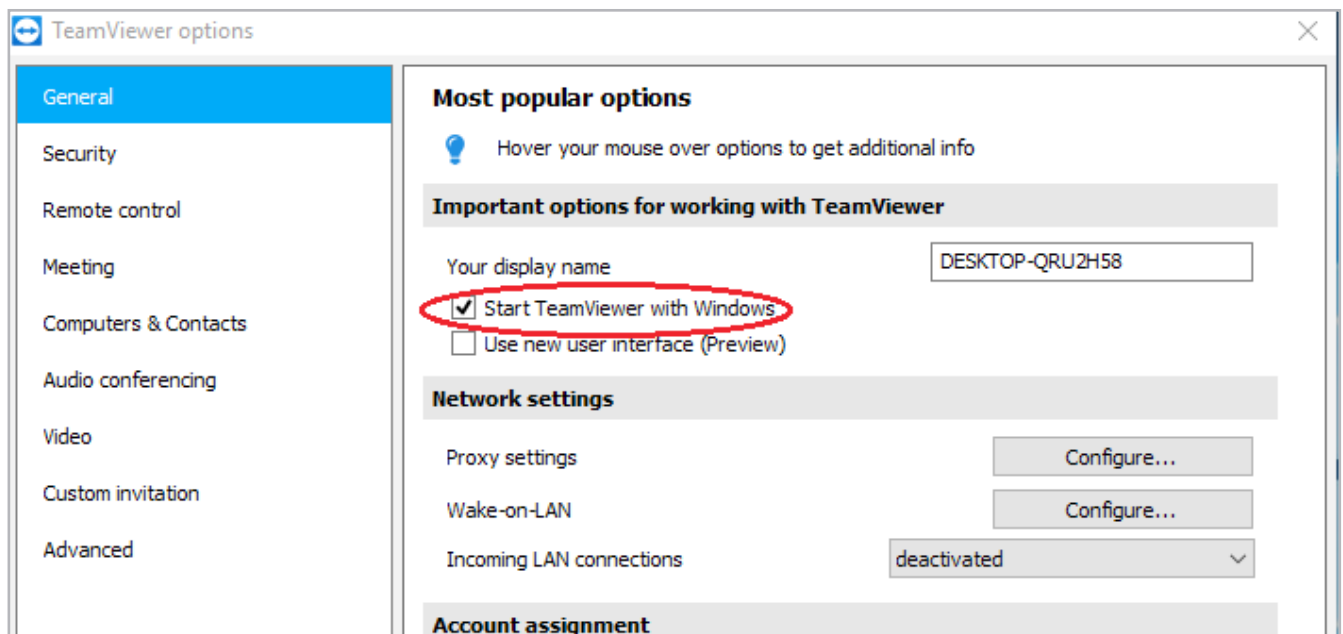


4. Applications to install

2. Click on **Extras**, then click on **Options**.

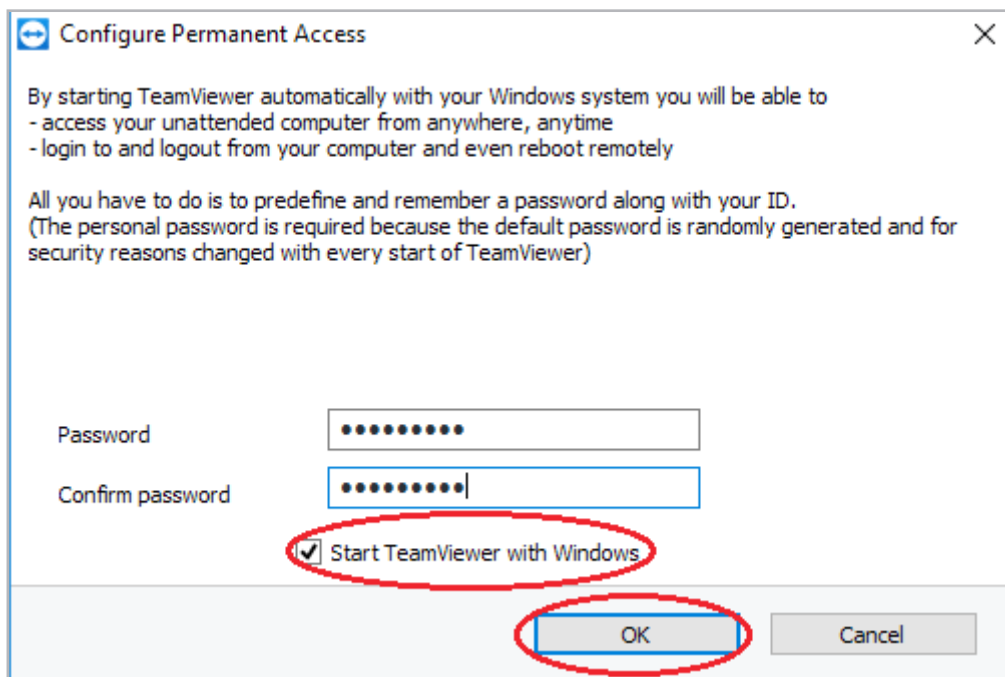


3. Tick **Start TeamViewer With Windows** option.



4. Applications to install

4. Set **alleantia** as password, tick **Start TeamViewer With Windows** and click on **OK**.



5. Click on **Security** tab on the right side. Select **Disabled (no random password)** in **Random password** section. Then set **alleantia** as password on **personal password** section and click on **OK**.

